

OPERATION MANUAL



FVS25E Vibratory screed Machine

PERFORMANCE · EFFICIENT · RELIABLE



Master sincerely thanks you for selecting the Concrete Cutting Machine. For your Safety and proper operation, before you start to operate or carry out any maintenance on this equipment, **YOU MUST READ** and **STUDY** this manual carefully. Be sure to always keep it ready for reference.

Produced By Henan Master Machinery Co.,Ltd

Dear Customer,

Thanks for choosing Master machine.

To ensure the safety and proper use of the machine, please read the instruction book carefully before use.

Also, please fill this card and save it for warranty use.

Buyer Name		Purchase Time	
Tel		Contact Person	
Address			
Product Name	Vibratory screed Machine		
MODEL	FVS25E		
Motor Model			
Note			

Maintenance record

Preventative maintenance and routine service plan

This Master Concrete Vibratory screed has been assembled with care and will provide years of service. Preventative maintenance and routine service are essential to the long life of your Master Concrete vibratory screed. After reading through this manual thoroughly you will find that you can do some of the regular maintenance yourself. However, when in need of parts or major service be sure to see your Master dealer. For your convenience we have provided this space to record relevant data about your concrete vibratory screed. When in need of parts or service be prepared to provide your screed serial number.

FOREWARD

- ◇ For your own safety and protection from bodily injuries, carefully read, understand and follow the safety instructions in this manual.
- ◇ Please operate and maintain your machine in accordance with the instructions in this manual.
- ◇ Defective machine parts are to be replaced as soon as possible.
- ◇ Keep this owner's manual handy, so you can refer to it at any time.
- ◇ No part of this publication may be reproduced without written permission.
- ◇ We expressly reserve the right to technical modifications- even without express due notice - which aim at improving our machines or their safety standards.

APPLICATION

This screed is a modern, high production machine intended to provide accurate strike-off of concrete slabs with or without the support of grade stakes or forms. The vibrations produced by the eccentric weight are equally transmitted along the beam length and will provide adequate consolidation of unreinforced slabs up to eight inches in depth. Multiple blade lengths and variable exciter weight positions allow

for optimum compaction and production of the slab placement.

SAFETY PRECAUTIONS

1. Before starting operation, the operator has to check that all control and safety devices function properly.
2. **NEVER** allow anyone to operate this equipment without proper training. People operating this equipment must be familiar with the risks and hazards associated with it.
3. **NEVER** touch the engine or muffler while the engine is on or immediately after it has been turned off. These areas get hot and may cause burns.
4. **NEVER** operate this machine in applications for which it is not intended.
5. **ALWAYS** wear protective clothing appropriate to the job site when operating equipment.
6. **ALWAYS** remain aware of moving parts and keep hands, feet, and loose clothing away from the moving parts of the machine.
7. **ALWAYS** operate the machine with all safety devices and guards in place and in working order.

OPERATOR SAFETY WHILE USING INTERNAL COMBUSTION ENGINES

Danger! Internal combustion engines present special hazards during operation and fueling. Read and follow the warning instructions in the engine owner's manual and the safety guidelines below. Failure to follow the warnings and safety guidelines could result in severe injury or death.

1. **DO NOT** run the machine indoors or in an enclosed area such as a deep trench unless adequate ventilation, through such items as exhaust fans or hoses, is provided. Exhaust gas from the engine contains poisonous carbon monoxide gas; exposure to carbon monoxide can cause loss of consciousness and may lead to death.

2. **DO NOT** smoke while operating the machine.

SERVICE SAFETY

Warning! Poorly maintained machines can become a safety hazard! In order for the machine to operate safely and properly over a long period of time, periodic maintenance and occasional repairs are necessary.

1. **DO NOT** attempt to clean or service the machine while it is running. Rotating parts can cause severe injury.
2. **ALWAYS** keep the area around the muffler free of debris such as leaves, paper, cartons, etc. A hot muffler could ignite the debris and start a fire.
3. **ALWAYS** keep the machine clean and labels legible. Replace all missing and hard-to-read labels. Labels provide important operating instructions and warn of dangers and hazards.
4. **ALWAYS** check all external fasteners at regular intervals.
5. **ALWAYS** handle blades carefully. The blades can develop sharp edges which can cause serious cuts.
6. **ALWAYS** turn engine off before performing maintenance or making repairs.

OPERATION

BEFORE STARTING & OPERATING

- ◇ **REMEMBER!** It is the owner's responsibility to communicate information on the safe use and proper operation of this unit to the operators.
- ◇ Review ALL of the Safety Precautions listed on page 3 of this manual.
- ◇ Familiarize yourself with the operation of the machine and confirm that all controls function properly.
- ◇ Know how to **STOP** the machine in case of an emergency.
- ◇ Make sure hands, feet, and clothing are at a safe distance from any moving parts.
- ◇ **AIR CLEANER** - Check to ensure element is in good condition and properly installed.

STARTING ENGINE

1. Turn engine switch to “ON”.
2. Choke engine if necessary (you may not need to choke a warm engine).
3. Pull starter rope repeatedly until engine starts.
4. If choke was moved to the closed position to start, gradually move it to the open position as the engine warms up.
5. Allow engine to warm up for one or two minutes.

STOPPING ENGINE

1. Move throttle to idle position.
2. Let engine idle for one or two minutes.
3. Turn switch on engine to “STOP” position.
4. Turn off electric valve

Warning! Always stop the engine before:

1. Cutting electric.
2. Leaving the equipment unattended for any amount of time.
3. Before making any repairs or adjustments to the machine.

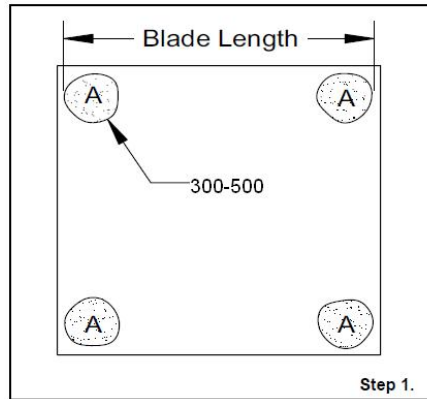
Warning! Never run the Screed above idle when the float blade is not in contact with concrete. This can damage the float blade.

USER SCREED

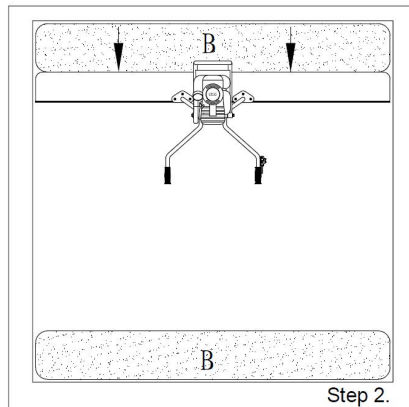
The Screed can be used with or without forms. The following describes the use of the Screed without forms.

1. Use a hand float to make a 300-500mm diameter wet pad (A) at the desired grade in the four corners of the area you wish to screed. The outer extents of the wet pads should not exceed the length of the float blade being used.

NOTE: Use a laser receiver, transit level, or grade stakes to help establish the correct grade.



2. Run the Screed between the wet pads to create two parallel strips (B) that define the grade for the remainder of the wet screeding. These strips should be 300-500 wide.



2. Place one end of the float blade on each of the parallel strips (B) and screed the concrete (C) in between the strips. Be sure the float blade follows the contour of the parallel strips

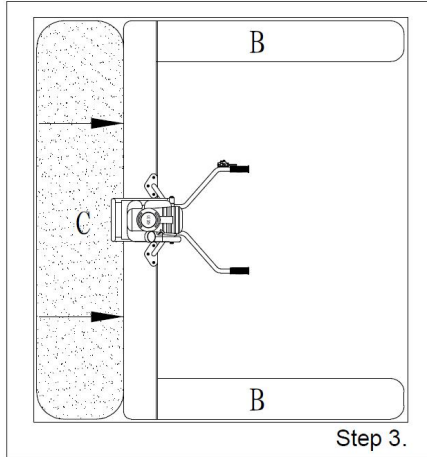
TRANSPORTING

It is recommended to transport the Screed with the float bar removed. The float bar is more likely to be damaged if attached to the main unit during transport.

STORAGE

The following steps taken to prepare your extended storage.

1. Close fuel shut off
2. Siphon excess tank.
3. Start engine until it lack of fuel. This will fuel in the carburetor formation of deposits evaporation of fuel.



should be
Screed for
valve.
gasoline from
stops from
use up all the
and prevent
due to

4. Remove spark plug and pour 2 oz. of SAE-30 or SAE-40 motor oil into the cylinder. Slowly crank the engine 2 or 3 times to distribute the oil throughout the cylinder. This will help prevent rust during storage. Replace spark plug.
5. Store the unit in an upright position in a cool, dry, well ventilated area.

Item	Maintenance	Each use	Every 20 hours	Every 100 hours	Each year
Engine	Refer to engine operator/owner manual	×			
Part	Check and tighten as		×		×



	needed				
Shockmount s	Check for cracks or tears		×		×

MAINTENANCE SCHEDULE

ENGINE MAINTENANCE

Refer to the engine owner’s manual for maintenance intervals and procedures.

ENGINE SPEED

The idle speed of the engine should not exceed the following:

Honda - 3500 rpm

Robin - 2000 rpm

If the idle speed is greater the clutch may not disengage. Check engine owner’s manual for procedure on setting idle speed.

CLEANING

Clean any concrete from the Screed immediately after each use. DO NOT allow concrete to harden on the screed.

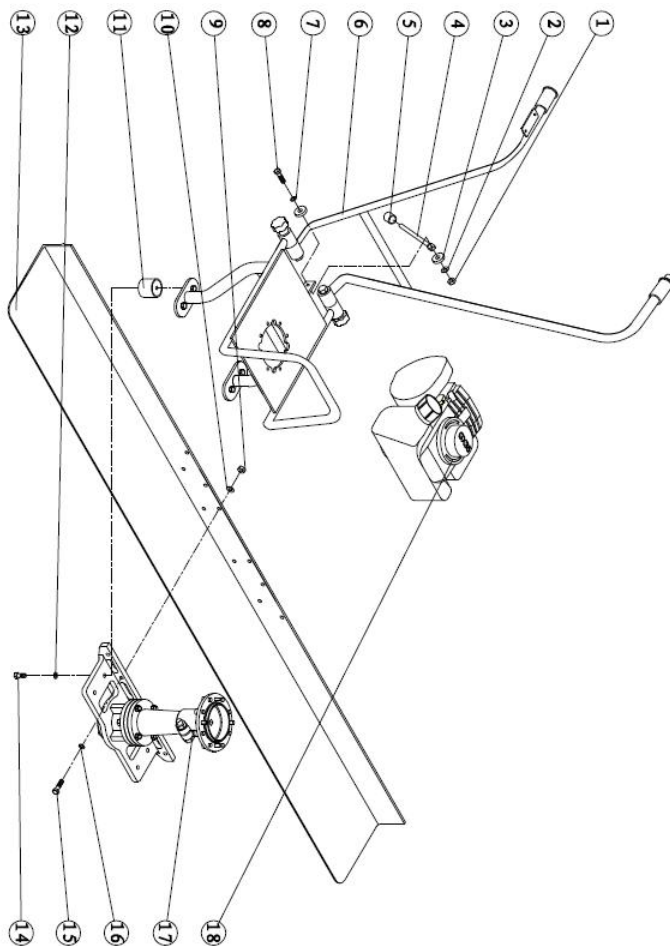
1. Use a hose to remove any excess concrete.
2. Remove any buildup with hard plastic bristle brush.

NOTE: DO NOT use a wire brush, hammer, or pressure washer to remove concrete from the main unit or float blade.

3. Remove the blade.
4. Start engine and run the exciter for about 10 seconds.
5. Shut down the engine.

DIAGRAM

1. VS25 screed assembly



Item	Part no.	part name	Qty
------	----------	-----------	-----



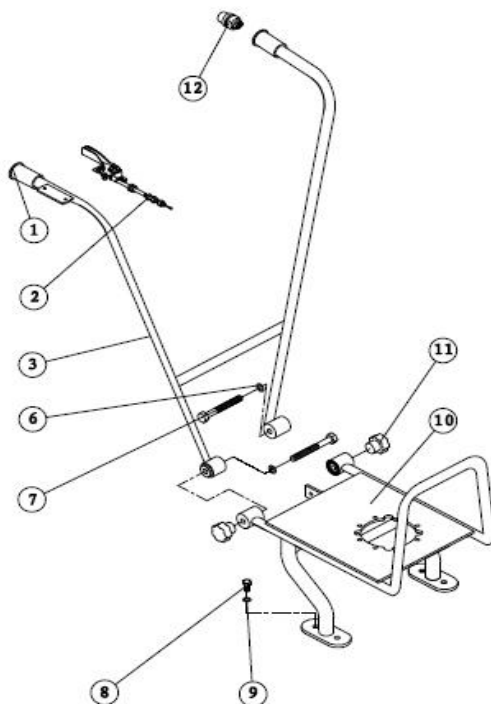
Henan Master Machinery Co., Ltd

Tel:(+86)17737606271

www.mastermachinerys.com

1	10001	Lock Nut M8	1
2	10002	Washer8	1
3	10003	Shock mount	2
4	10004	Kickstand	1
5	10005	Bushing	1
6	10006	Handle assembly	1
7	10007	Gasket8	1
8	10008	Bolt M8x30	1
9	10009	Lock Nut M8	6
10	10010	Washer8	6
11	10011	Damp block	4
12	10012	Gasket8	4
13	10013	Screed	1
14	10014	Bolt M8x20	4
15	10015	Bolt M8x30	6
16	10016	Gasket8	6
17	10017	Exciter	1
18	10018	Engine GX35	1

2. Handle assembly

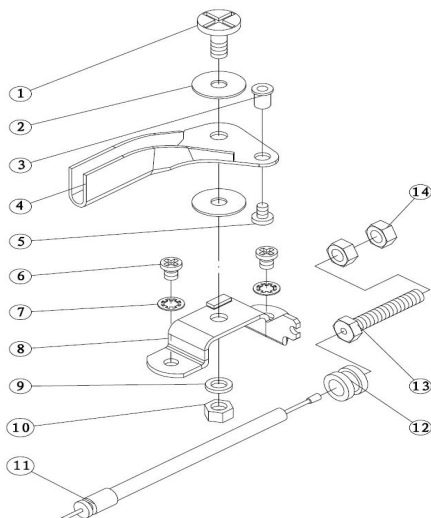


Item	Part no.	part name	Qty
1	1000601	Bushing $\phi 25$	2
2	1000602	Throttle Control assembly	1
3	1000603	Handle	1
6	1000604	Gasket10	2
7	1000605	Bolt M10x90	2
8	1000606	Bolt M8x16	4
9	1000607	Gasket8	4
10	1000608	Engine-mounting plate	1
11	1000609	Nut M10	2

12	1000610	Switch	1
----	---------	--------	---

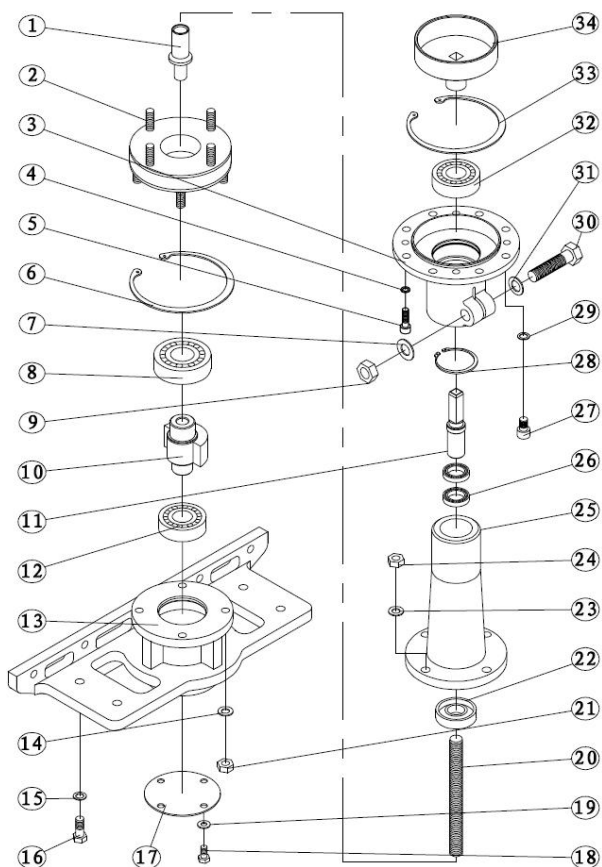
2. Throttle control assembly

Item	Part no.	part name	Qty
1	100060201	Screw M6×16	1
2	100060202	Washer	2
3	100060203	Bushing	1
4	100060204	Lever	1
5	100060205	Screw M4×6	1
6	100060206	Screw M5×6	2
7	100060207	Lock washer5	2
8	100060208	Plate	1
9	100060209	Gasket 6	1
10	100060210	Lock nut M6	1



11	100060211	Cable	1
12	100060212	Bushing	1
13	100060213	Bolt	1
14	100060214	Nut M6	2

3. Exciter assembly





Henan Master Machinery Co., Ltd

Tel:(+86)17737606271

www.mastermachinerys.com

Item	Part no.	part name	Qty
1	1001701	Shaft pin	1
2	1001702	Rubber ring	1
3	1001703	Flange	1
4	1001704	Gasket 6	4
5	1001705	Screw 6×20	4
6	1001706	Retaining ring 52	1
7	1001707	Washer 12	1
8	1001708	Bearing 6205-2RS	1
9	1001709	Lock Nut 12	1
10	1001710	Shaft	1
11	1001711	Shaft pin	1
12	1001712	Bearing 6204-2RS	1
13	1001713	Exciter mount	1
14	1001714	Washer 8	4
15	1001715	Gasket 8	4
16	1001716	Bolt 8×20	4
17	1001717	Cover	1
18	1001718	Bolt 6×12	4
19	1001719	Gasket 6	4
20	1001720	Shaft	1
21	1001721	Lock Nut 8	4
22	1001722	Seal 40×17×10	1
23	1001723	Washer 8	4
24	1001724	Lock Nut 8	4
25	1001725	Flange	1
26	1001726	Bearing1000803	2



		17×26×5	
27	1001727	Screw 8×16	8
28	1001728	Retaining ring 20	1
29	1001729	Gasket 8	8
30	1001730	Bolt 12×55	1
31	1001731	Gasket 12	1
32	1001732	Bearing 6204-2RS	1
33	1001733	Retaining ring 47	1
34	1001734	Shaft pin	1

Change Master Machinery Co., Ltd. values your business and always attempts to provide you the very best service. The Master warranty policy is designed to achieve business agility and provides you with different options to protect your valuable assets. In this document you will find all you need to know about Master Warranty in terms of Duration, Coverage and Customer service.

Warranty Period

Master warrants its products to be free from manufacturing defects or technical defects for a period of one year after original date of purchase. This warranty only applies to the original owner and is not transferable.

Warranty Coverage

Master products are warranted to be free from defects in material and workmanship under normal use within the warranty period. Products not sold through Master Authorized Distributors are not covered in the warranty agreement. Warranty obligations for customized products are governed by separate contracts and not covered in this document.

Master does not warranty engines. Engine warranty claims should be made directly to an authorized factory service center for the particular engine manufacturer.

Master's warranty does not cover the normal maintenance of products or its components (such as engine tune-ups and oil & filter changes). The warranty also does not cover normal wear and tear items (such as belts and consumables).

Master's warranty does not cover the defect resulted from operator abuse, failure to perform normal maintenance on the product, modification to product, alterations or repairs made to the product without the written approval of Master.

Exclusions from Warranty

Master assumes no liability as a consequence of following circumstances, under which the warranty becomes void and ceases to take effect.

- 1) The product is found to be defective after the warranty period has expired
- 2) The product has been subjected to misuse, abuse, negligence, accident, tampering, altering or unauthorized repair, whether by accident or other causes
- 3) The product has been damaged due to disasters or extreme conditions, whether natural or human, including but not limited to flood, fire, lightning strikes or power line disturbances
- 4) The product has been subject to environmental conditions beyond the designed tolerance

Customer Service

In order to help the customer to resume normal operation as soon as possible and



Henan Master Machinery Co., Ltd

Tel:(+86)17737606271 www.mastermachinerys.com

avoid examination fees on devices that are not actually damaged, we are eager to assist you with remote troubleshooting and seek every possible way to fix the device without the unnecessary time and expense of returning the device for repair.

If you have a question or you would like to contact us for something else, please do not hesitate to contact us and we will be happy to answer any question or concern you may have.