

# OPERATION MANUAL



## FWT40 Edge Power Trowel I

PERFORMANCE · EFFICIENT · RELIABLE

**Master** sincerely thanks you for selecting the Plate Compactor Machine. For your Safety and proper operation, before you start to operate or carry out any maintenance on this equipment, **YOU MUST READ** and **STUDY** this manual carefully. Be sure to always keep it ready for reference.

**Produced By Henan Master Machinery Co.,Ltd**

**Dear Customer,**

**Thanks for choosing Master machine.**

**To ensure the safety and proper use of the machine, please read the instruction book carefully before use.**



**Also, please fill this card and save it for warranty use.**

Buyer Name		Purchase Time	
Tel		Contact Person	
Address			
Product Name	Power Trowel		
MODEL	FWT24		
Motor Model			
Note			

## CONTENTS

Contents	.....	1
Quality assurance/machine break-in	.....	2
Edger Power Trowel warranty	.....	2
Maintenance record	.....	3
Routine service intervals	.....	6
Forward	.....	7
Safety precautions	.....	7
Assembly instructions	.....	8
Operation (Floating)	.....	9
Operation (Finishing)	.....	9
Starting procedure	.....	10
Stopping procedure	.....	10
Maintenance	.....	11
Belt tension	.....	11




---

Transporting	.....	11
Lubrication	.....	11
Storage	.....	12
Troubleshooting	.....	13
Specifications	.....	15
Diagram	.....	18

**QUALITY ASSURANCE/MACHINE BREAK IN**

The Edger Power Trowel is the product of extensive engineering development designed to give long life and unmatched performance. The Edger Power Trowels are shipped fully assembled, and only require filling with fuel and a brief check of lubricant levels in preparation for operation.

You can help ensure that your Power Trowel will perform at top levels by observing a simple routing on first use. Consider that your new Power Trowel is like a new car. Just as you would break in a new a car to the road or any new machine to the job, you should start gradually and build up to full use. Learn what your machine can do and how it will respond. Refer to the engine manufacturer's manual for run-in times. Full throttle and control may be used after this time period, as allowed by material. This will serve to further break in the machine on your specific application, as well as provide you with additional practice using the machine.

We thank you for the confidence you have placed in us by purchasing an Edger Power Trowel and wish you many years of satisfied use.

**EDGER POWER TROWEL WARRANTY**

The Engineering agrees to furnish without charge, F.O.B. our plant, a replacement for any part or portion thereof, comprising the main unit of the Edger Power Trowel, consisting of the drive shaft assembly and the gear case assemblies, save and except drive belts, and power units, and/or bearing or electrical controls which prove upon our examination, to be defective in either material or workmanship



Henan Master Machinery Co., Ltd

Tel:(+86)17737606271      www.mastermachinerys.com

within a period of twelve (12) months from date of purchase, provided that notice of such defective part or portion thereof is given to the Engineering within the twelve month warranty period. No further or other guarantee or warranty expressed or implied in connection with the sale of the Edger Power Trowel is given and our sole liability consists in replacing defective parts or portions thereof. We shall not be responsible for any special, indirect or consequential damages arising in any manner whatsoever.

This guarantee is for the sole benefit of the original purchaser as end user. Our responsibility under this guarantee ends in the case the original purchaser transfers ownership of the Edger Power Trowel, makes any changes or adds any parts or devices not of our manufacture to the Edger Power Trowel.

### **MAINTENANCE RECORD**

#### **PREVENTATIVE MAINTENANCE AND ROUTINE SERVICE PLAN**

This Edger Power Trowel has been assembled with care and will provide years of service. Preventative maintenance and routine service are essential to the long life of your Power Trowel. Your dealer is interested in your new machine and has the desire to help you get the most value from it. After reading through this manual thoroughly, you will find that you can do some of the regular maintenance yourself. However, when in need of parts or major service, be sure to see your Morrison dealer. For your convenience we have provided this space to record relevant data about your Edger Power Trowel. When in need of parts or service be prepared to provide your Trowel serial number. Locate the serial number now and record in the space below.

Date		Type of	
Dealer Name:		Model:	



Henan Master Machinery Co., Ltd

Tel:(+86)17737606271

www.mastermachinerys.com

Dealer Phone:			Serial Number:				
REPLACEMENT PARTS USED				MAINTENANCE LOG			
PART NO.	QUANTITY	COST	DATE		DATE		OPERATION
<b>Routine Service Intervals</b>		Each use	After 1.5 months or 50hrs	Each 3 months or 100hrs	Each 6 months or 200hrs	Each 9 months or 300hrs	Each 12 months or 400hrs
		General Inspection:					
Guards	Check		○	○	○	○	○
Warning stickers	Check		○	○	○	○	○
Test run	Check operation		○	○	○	○	○
Controls:							
Dead-man switch operation	Check	○	○	○	○	○	○
Pitch control assembly	Check	○	○	○	○	○	○
	Lubricate		○	○	○	○	○
Engine:							
Engine oil	Check level	○	○	○	○	○	○



Henan Master Machinery Co., Ltd

Tel:(+86)17737606271

www.mastermachinerys.com

	Change		○		○		○
Engine oil filter	Replace				○		○
Oil cooler	Clean			○	○	○	○
Cooling Fins	Clean		○	○	○	○	○
Air cleaner	Check-clean	○	○	○	○	○	○
	Replace						○
Air Intake Line	Check				○		
	Replace						2 yrs
Fan Belt	Check tightness				○		○
	Replace						500 hrs
Valve clearance	Check-adjust				○		○
Fuel filter	Check & Clean			○	○	○	○
	Replace				○		○
Fuel Tank	Clean						500hrs
Engine wiring	Check						○
Drive Train:							
Clutch/Pulley	Check	○	○	○	○	○	○



operation							
Spider plate assembly	Check	○	○	○	○	○	○
	Lubricate				○		○
V-Belt	Check	○	○	○	○	○	○
Blades	Check	○	○	○	○	○	○
Gearbox:							
Gearbox oil	Check level	○					
	Replace				○		○
Gearbox breathers	Check operation			○	○	○	○

### Routine Service Intervals

**Due to the nature and environment of use, Edger Power Trowels could be exposed to severe operating conditions. Some general maintenance guidelines will extend the useful life of your trowel.**

- The initial service for your trowel should be performed after 25 hours of use, at which time your mechanic (or authorized repair shop) should complete all of the recommended checks in the schedule above. The chart on page 6 (six) is handy for keeping a record of the maintenance performed and the parts used for servicing your trowel.
- Regular service according to the schedule above will prolong the life of the Edger Power Trowel and prevent expensive repairs.
- Keeping your Edger Power Trowel clean and free from debris is the single

most important regular maintenance operation, over and above the checks in the service schedule above, that can be performed. After each use your Edger Power Trowel should be cleaned to remove any dust and debris from the undercarriage and surrounding components. Use of a power washer will make clean up quick and easy, especially if a non-stick coating was applied prior to use.

- In the Service Schedule above, items that should be checked, replaced or adjusted are indicated by "○" in the appropriate column. Not all Edger Power Trowel models include the same features and options and as such not all service operations may have to be performed. For ease of recording place a checkmark (√) through the "○" when the item is complete. If an item is not required or not complete place an "×" through the "○" in the box.
- All Edger Power Trowel have governed engine speed of 3600 rpm. See engine manufacturer's manual for exact specifications. Care should be used when making any adjustments to the Edger Power Trowel not to and lower travel speed. It will create excessive "out-of-synch" vibrations resulting in poor compaction, maneuverability, excessive wear to the machine, and discomfort to the operator.
- Failure to have your Edger Power Trowel regularly serviced and properly maintained in accordance with the manufacturer's instructions will lead to premature and void the warranty.

## **FORWARD**

The Bartell Edger Power Trowel, also known as a Mini-trowel/Edger, has been developed to float and finish the edges of concrete floors, up to perimeter walls, around columns and small areas, eliminating tiring hand troweling and increasing overall productivity and quality.





## SAFETY PRECATIONS

1. Always keep unauthorized, inexperienced, untrained people away from this machine.
  2. Rotating and moving parts will cause injury if contacted. Make sure guards are in place. Keep hands and feet away from moving parts.
    - a. Fuel the machine only when the engine is stopped, using all necessary safety precautions.
    - b. The engine must always be stopped before attempting any repair or adjustments. Ignition switch should be off.
    - c. To avoid slipping and loss of control when starting the trowel, the operator should maintain good footing. It is recommended that the operator wear safety shoes for added protection.
      - Be careful when working around pipes or ducts protruding from the floor or slab edges. If the trowel blades hit such obstacles, damage to the machine or possible operator injury may result.
      - When starting the machine, do not exceed 1/3 throttle position. A higher setting may cause the Centrifugal clutch to engage and the handle to rotate.
  1. Be careful not to come in contact with the muffler when the engine is hot, serious burns may result!
    - Over time, the blades will form a sharp edge. Be careful when handling the old blades.
- DANGER:**Never operate the machine in an explosive atmosphere, near combustible materials or where ventilation does not clear exhaust fumes. Repair fuel leaks immediately. Refer to your engine owner's manual for more safety instructions.

## ASSEMBLY INSTRUCTIONS

Your new Bartell Edger Power Trowel has been shipped to you fully assembled.

All you need to do is unfold the handle and fasten the knob. Remove any shipping or packing materials. Be sure to remove and discard the band securing the safety/stop switch to the left handle. This serves only to facilitate shipping and is not intended to be a permanent feature. When removing the machine from the carton, be careful to use the handles to left the unit from the carton. **NEVER LIFT THE MACHINE BY THE RING OR DISC.** Filling the fuel tank and a brief check of lubricant levels in preparation for operation is required.

**IMPORTANT:** Before running machine with belt installed, ensure that engine idles properly and that the safety-switch shuts off the engine.

**ATTENTION:** For any information regarding engine adjustments, please refer to the engine manual supplied.

### **OPERATION (Floating)**

When the slab has set sufficiently firm that the operator's footprint leaves a very slight depression on the surface of the slab, it is ready for the floating operation.

Guiding the machine on the slab is very simple; a slight upward lift of the handle causes the machine to travel to the left. Holding the handle in the neutral position, will slowly cause the machine to spin in one spot. Slight downward pressure on the handle cause the machine to the travel to the right. Best results are obtained by covering approximately 4" on each turn. In other words, let the machine move right or left, backwards or forwards, approximately 4" with each revolution of the trowels. To fill a hole or cut down hump, move the unit back and forth over the problem area.

Under normal operating conditions the machine should cover as much as 1000 sq. ft. in about 15 minutes. It is recommended that a slight tension on the trowel control cable, (but not a definite tilt), during the floating operation will cause the machine to operate much smoother. After the floated slab has set sufficiently, it is ready for the finishing operation.

**CAUTION:** Do not let the machine stand in one spot on the soft cement. Lift

---

from the slab when the floating operation is complete.

### **OPERATION (Finishing)**

When starting the finishing operation, never set the trowels up over 1/4" pitch. After the floating operation, the first thing to do is to remove the floating disc from the blades. Clean the blades, spider plate and disc from cement paste collected during the floating operation. Increase the blade pitch up to a maximum of 1 cm for the first finishing operation and then continue to increase the pitch on the following finishing operations. Continue the finishing passes until you obtain the desired floor finish. The time required between each finishing pass is again dependent on the weather conditions and water content of the concrete etc. If some areas of the concrete set/harden too fast you may apply a small amount of water using a hand brush as an aid to achieving the finish.

### **STARTING PROCEDURE: ☆WARM CLIMATE**

Open fuel valve on gas tank. Set throttle lever to "Fast" idle position, set choke to closed position, start engine. Open choke slightly to prevent flooding. Move to "Open" or "Run" position when engine is warm, increase throttle to maximum operation position (3600 rpm).

### **STARTING PROCEDURE: ☆COLD CLIMATE**

Follow same procedure as above but allow longer warm-up period -3 to 5 minutes. In cold weather, oil is much heavier to move and requires more time to work its way into the moving parts. If maximum power is not attained, allow further warm-up time.

### **STOPPING PROCEDURE**

1. Throttle engine down.
2. Turn off stop switch.

---

---

## MAINTENANCE

Maintaining your Edger Power Trowel will insure long life to the machine and its components.

**AIR CLEANER** - Keep air filter clean at all times. Wash away dust and debris using a non-oil based cleaning solvent. Let the filter dry before re-installing.

**LUBRICATION** - Always check engine oil regularly. Use proper engine oil as recommended. See chart on this page. Fill crankcase to levels as recommended in manufacture's engine manual.

**SPARK PLUG** - Check and clean spark plugs regularly. A fouled, dirty or carboned spark plug causes hard starting and poor engine performance. Set spark plug gap to recommended clearance. Refer to engine manual.

### **BELT TENSION - IMPORTANT!**

When the engine is switched off, and the machine has stopped, the normal belt play should be loose. This is due to the clutch type. When the machine is running at full throttle, the clutch will close in, which tighten the belt causing the gearbox to engage.

When adjusting the belt makes sure that the clutch is in alignment with the follower pulley. Secure belt guard. Tighten all engine mount bolts, and tighten lock nuts.

## TRANSPORTING

When transporting the trowel, always keep the handle folded and the blades flat on the floor to prevent damage to the pitch control system. Always keep the floating disc underneath the blades to protect them against damage.

**CAUTION:** Never lift the trowel by the rotating ring; use the hoist hook or handle provided on the trowel. Remove the float disc when lifting machine more than 100cm (40in). The floating disc could fall off.



## LUBRICATION

### 1. ENGINE OIL

The long life and successful operation of any piece of machinery is dependent on frequent and thorough lubrication. Before using the trowel, always check your engine for oil. Use proper engine oil as recommended in the engine manufacturer’s manual. Fill crankcase to levels as recommended.

### 2. SPIDER PLATE

The trowel arm on the spider plate does not require lubrication. If a trowel arm becomes jammed, this is probably due to a bent arm, which will require replacement. Appropriate "winterize" steps should be taken if the machine is going to be stored for long periods of time.

### 3. GEARBOX

In operation the gearbox lubricant is in fluid state. When the machine is stopped the lubricant returns to a gel state. It will only be necessary to inspect the sealed components if the outside of the gearbox gets too oily or otherwise shows evidence of a leak. If this happens, clean the machine thoroughly and look for leaks. Effect necessary repairs immediately, Use SHELL TIVELA COMPOUNDS 'A' (0.3L, 10.1oz.) gear oil or equivalent to top up the gear box after any maintenance to the internal components.

## ENGINE OIL SPECIFICATIONS

Season Temperature	Grade of engine oil
Spring to Autumn +40°F (4°C) to +120°F (49°C)	SAE 30
Winter +15°F (-9°C) to +40°F (4°C)	SAE 20
Below +15°F (-9°C)	SAE 10W-30

## STORAGE

The following steps should be taken to prepare your Edger Power Trowel for

extended storage.

1. Close fuel shut off valve.
2. Siphon excess gasoline from tank.
3. Start engine until it stops from lack of fuel. This will use up all the fuel in the carburetor and prevent formation of deposits due to evaporation of fuel.
4. Remove spark plug and pour 2 oz. of SAE-30 or SAE-40 motor oil into the cylinder. Slowly crank the engine 2 or 3 times to distribute the oil throughout the cylinder. This will help prevent rust during storage. Replace spark plug.
5. Store the unit in an upright position in a cool, dry, well ventilated area.

## **TROUBLESHOOTING**

### **WON'T START**

- Throttle fully open
- Hand lever wire broken
- No gas
- Dirty gas
- No oil
- Gas filter plugged
- Gas line plugged
- Hole in gas line
- Gas supply valve turned off
- Dead-man safety switch is off
- Safety switch wire or connectors not making good contact
- Other engine problems (Refer to engine manual)

### **STARTS BUT NO HIGH SPEED**

- Engine problems
- Throttle cable broken or seized

- Throttle lever and connectors loose or out of adjustment
- Clutch shoes worn

**STARTS AT HIGH SPEED, WON'T SLOW DOWN**

- Same as above

**ENGINE WON'T STOP**

- Safety switch, wire or connectors not making good contact
- Micro-switch burnt out

**ENGINE STARTS BUT WON'T TURN TROWELS AT ANY SPEED**

- Clutch seized
- No weights in clutch
- Wrong belt
- Broken or missing key
  - Clutch seized
  - Pulley
  - Worm gear (countershaft)
  - Main gear
  - Spider plate

1. Gearbox seized

**TROWELS TURN, ENGINE AT IDLE**

2. Idle too fast
3. Belt too tight
4. Clutch seized
5. Pulley out of alignment

**TROWELS BLADES WEARING UNEVENLY**

6. Spider plate seized
7. Arms bent
8. Adjusting screws (carriage bolts) incorrectly set
9. Floating disc not evenly attached to the blades

**MACHINE JUMPS ON FLOOR**

10. Concrete hardened on bottom of spider plate
11. Trowels unevenly worn/bent
12. Spider plate seized
13. Spider plate loose
14. Trowel arms bent
15. Adjusting screws (carriage bolts) incorrectly set
16. Main shaft bent

#### PITCH CONTROLS WILL NOT OPERATE BLADES

17. Cable broken or out of adjustment
18. Pressure plate assembly contaminated with concrete debris
19. Slot screw missing (under-side of handle)
20. Spider plate seized
21. Pressure plate and/or yoke arm broken or badly worn
22. Hand crank adjuster malfunctioning

#### BELT WEARING RAPIDLY

23. Belt is too tight
24. Pulley out of alignment
25. Wrong belt/defective belt
26. Clutch sticking
27. Gearbox seizing

#### OIL LEAKS

- a. Top of gearbox
  - Gearbox seal worn
  - Engine leaks
  - Too much oil in gearbox
- b. At main shaft or countershaft
  - Shaft and/or seal worn
  - Retaining screw(s) loose

#### TROWEL BLADES WILL NOT TURN



- Yoke arm broken
- Key sheared
- Gearbox malfunction

**SPECIFICATIONS**

Model	Path	Power Source (gas option)	Float Blade Size	Finish Blade Size	Combination Blade Size	Pans Floats	Pans Floats	Operating Weight
B424 (Edging)	24" (60 cm)	4 hp Honda OHV 4 hp Robin OHV	N/A	4.75"×9" (12×23 cm)	N/A	24" (60 cm)	138 lbs.63 kg	Up to 110 lbs. (50 kg)
B430 (Edging)	30" (76 cm)	5.5 hp Honda OHV 6 hp Robin OHV	10"×30" (25×28 cm)	6"×10.5" (15×26 cm)	6"×10" (15×25 cm)	30" (76 cm)	184 lbs. 84 ke	Up to 145 lbs. (66 kg)

**TECHNICAL INFORMATION**

B424, B430 EDGER TROWEL	
Overall Dimensions (W×H×L)	29 1/2"×58 1/2"×36" (750mm × 1490mm × 910mm)
Shipping Dimensions	39"×40"×31" (1000mm × 1020mm × 790mm)
Shipping Weight	157 lbs (71 kg) ~ B424



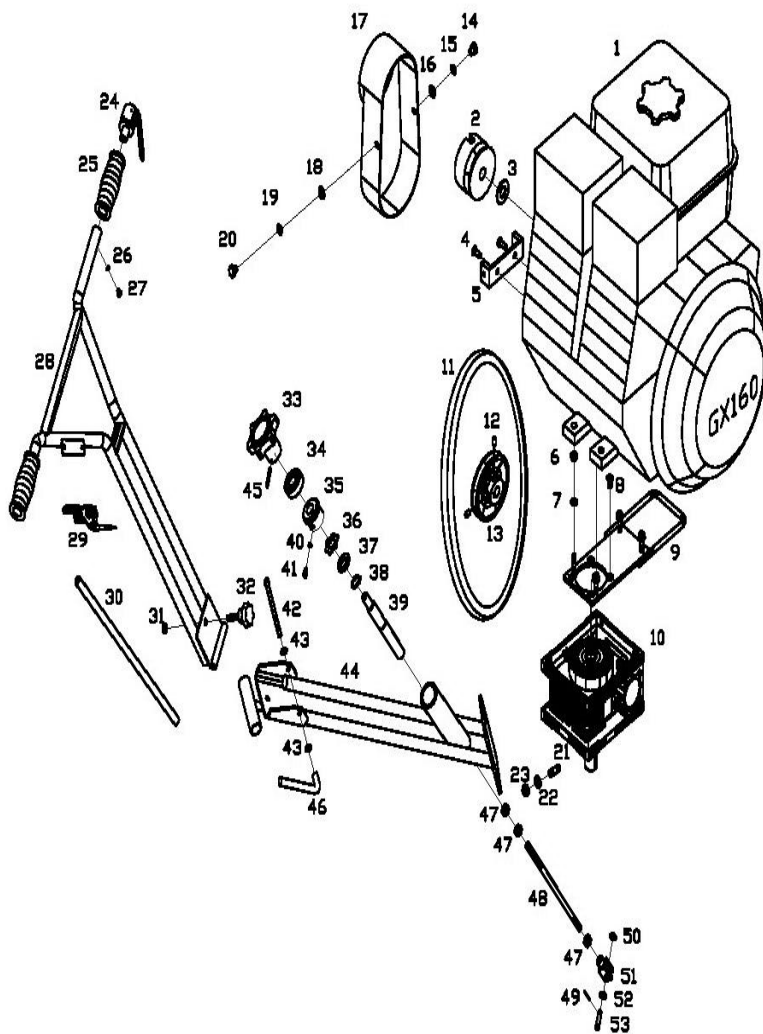
Henan Master Machinery Co., Ltd

Tel:(+86)17737606271 [www.mastermachinerys.com](http://www.mastermachinerys.com)

	192 lbs (87 kg) ~ B430
Blade Speed (RPM) Engine Speed (RPM)	70 min —140 max 3600
Clutch Type Variable Speed	Centrifugal Yes
Gearbox Oil Gearbox Oil Capacity Engine Fuel Engine Oil Alert Cooling Starting	Shell Tivela Compounds A or similar type 10.1 oz. (0.3 L.) Gasoline — Unleaded Yes Air Recoil Starter - Manual
Dead-man Safety Switch Fuel Capacity (approximately) Running Time (approximately)	Yes 0.66 Gal. (2.5 L) 2.5 -3 hours
Number of Blades	4
Average acoustic power (dB) Average acoustic pressure (dB) Acoustic pressure on operator (dB) Vibration valve on the handle (aw)	103.2 88.8 89.1 7.0
Options	Hoist Hook Folding Handle

**DIAGRAM**

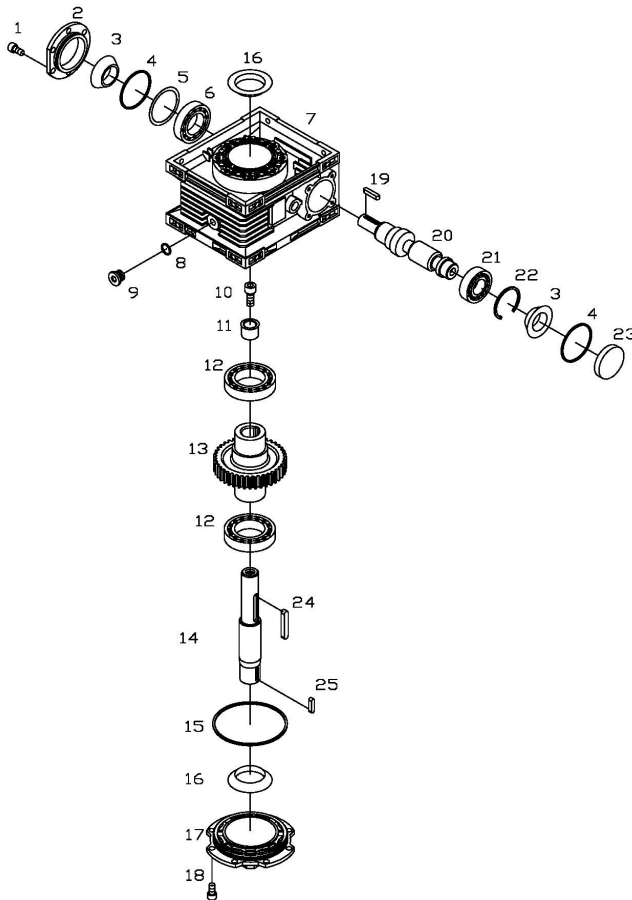
1. Complete Edger Trowel:



Item	Part	Drawing No.	Description	Qty
1	101		GX160	1
2	102	FWT24-15	Washer	1
3	103	FWT24-16	Clutch	1
4	104	GB/T820-2000	Screw(M8x16)	2
5	105	FWT24-18	Belt Guard Plate	1
6	106	GB/T6182-2000	Locknut(M8)	4
7	107	GB/T95-1985	Washer(8)	4
8	108	GB/T70.3-2000	Screw(M8x16)	4
9	109	FWT24-11	Engine Mount plate	1
10	110	QJM760-06	Gearbox assembly	1
11	111		Belt Opti(A 24)	1
12	112	GB/T77-2000	Screw(M8x12)	2
13	113	FWT24-19	Pulley	1
14	114	GB/T95-1985	Washer(10)	1
15	115	GB/T5783-2000	Bolt(M10x10)	1
16	116	GB/T93-1987	Gasket(10)	1
17	117	FWT24-17	Belt Guard	1
18	118	GB/T95-1985	Washer(10)	1
19	119	GB/T5783-2000	Bolt(M10x10)	1
20	120	GB/T93-1987	Gasket(10)	1
21	121	GB/T901-1988	Hex Bolt(M10x30)	4
22	122	GB/T95-1985	Washer(10)	4
23	123	GB/T6182-2000	lock Nut(M10)	4
24	124	FWT24-10-01	Control-throttle assembly	1
25	125	FWT24-10-04	Handle Grip	2
26	126	GB/T93-1987	Gasket(5)	1

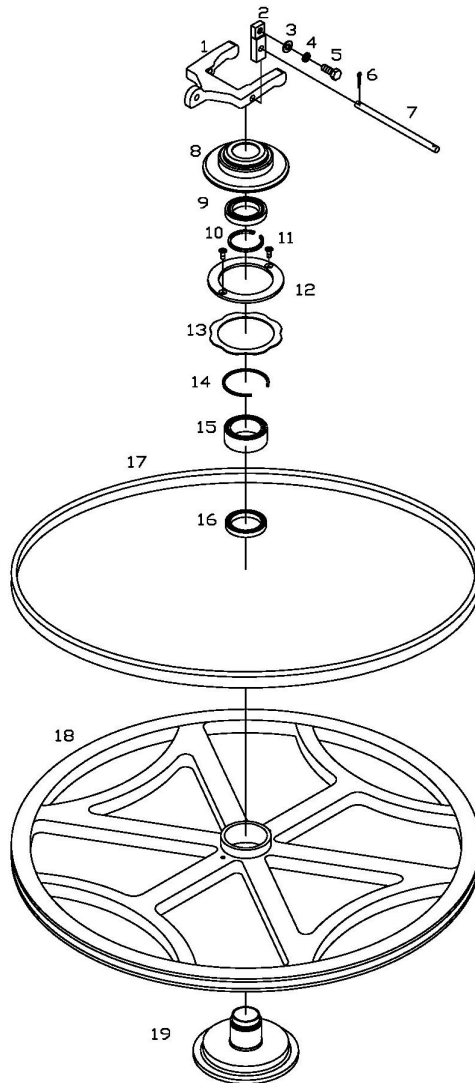
27	127	GB/T818-2000	Screw(M5x8)	1
28	128	FWT24-10-05	Upper Handle	1
29	129	FWT24-10-02	Throttle Lever	1
30	130	FWT24-10-03	Rubber Hose	1
31	131	GB/T6170-2000	Nut M8	1
32	132	FWT24-10-06	Bolt	1
33	133	FWT24-10-09-01	Pitch Control Ass	1
34	134		Bearing(51704 ZSV)	1
35	135	FWT24-10-09-02	Bushing	1
36	136		Wave Washer(20)	1
37	137	FWT24-10-09-03	Spacer	1
38	138	GB/T894.1-1986	Retaining Ring(20)	1
39	139	FWT24-10-09-04	Threaded Rod	1
40	140	GB/T93-1987	Gasket(6)	1
41	141	GB/T5783-2000	Bolt(M6x10)	1
42	142	GB/T5783-2000	Bolt(M8x110)	1
43	143	GB/T95-1985	Washer(8)	2
44	144	FWT24-10-08	Lower Handle	1
45	145	GB/T119.1-1976	Pin(5x35)	1
46	146	FWT24-10-07	Lever Nut	1
47	147	GB/T5783-2000	Nut(M10)	3
48	148	FWT24-10-09-05	Hex Bolt	1
49	149	GB/T91-1976	Retaining Ring(3x20)	1
50	150	GB/T95-1985	Washer(8)	2
51	151	FWT24-10-09-06	Yoke Tip	1
52	152	GB/T95-1985	Washer(8)	2

2. Gearbox Assembly:



Item	Part	Drawing No.	Description	Qty
1	11001	GB/T70.1-2000	Socket screw(m8×16)	6
2	11002	FWT24-12-07	Gear unit cover	1
3	11003		Oil seal(TTO E214 TC)	2
4	11004	GB1235-1976	O-ring(62×1.9)	2
5	11005	FWT24-12-08	Spacer	1
6	11006		Bearing(6007-2RS)	1
7	11007	FWT24-12-06	Casing	1
8	11008	GB1235-1976	O-ring(18×1.9)	2
9	11009	FWT24-12-03	Plug	2
10	11010	GB/T70.1-2000	Socket screw(m10×25)	1
11	11011	FWT24-12-01	Spacer	1
12	11012		Bearing(6009-2RS)	2
13	11013	FWT24-12-02	Worm gear	1
14	11014	FWT24-12-05	Worm shaft	1
15	11015	GB1235-1976	O-ring(110×1.9)	1
16	11016		Oil seal(TTO F208 TC)	2
17	11017	FWT24-12-04	Large flange	1
18	11018	GB/T70.1-2000	Socket screw(m8×16)	8
19	11019	GB/T1095-1979	Key(6×6×30)	1
20	11020	FWT24-12-09	RV worm shaft	1
21	11021		Bearing(6205P6Z2 ZHB)	1
22	11022	GB/T893.1-2000	Circlip(52)	1
23	11023	FWT24-12-10	Cap	1
24	11024	GB/T1095-1979	Key(8×7×50)	1
25	11025	GB/T1095-1979	Key(6×6×25)	1

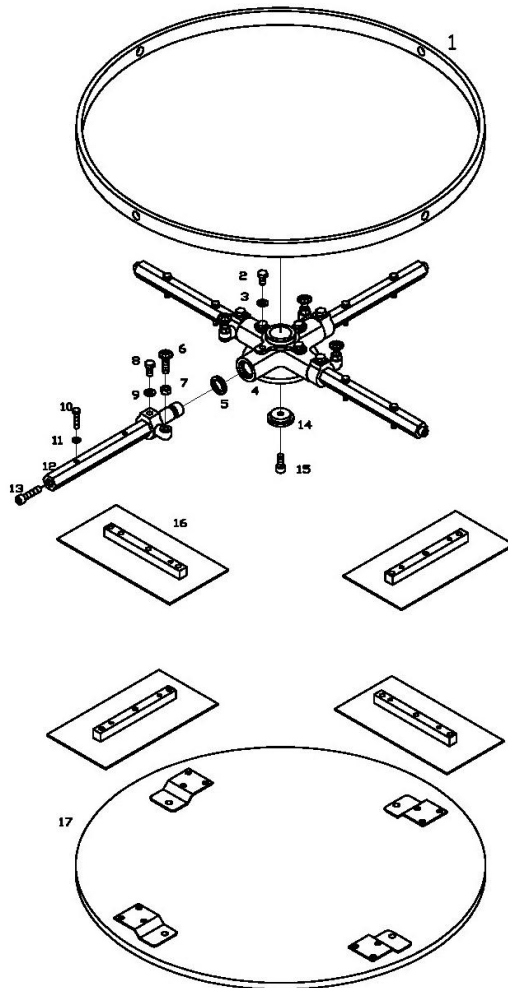
3. Pressure Plate Assembly:





Item	Part	Drawing No.	Description	Qty
1	201	FWT24-07	Yoke Arm	1
2	202	FWT24-08	Pin Support	2
3	203	GB/T95-1985	Washer(8)	2
4	204	GB/T93-1987	Gasket(8)	2
5	205	GB/T5783-2000	Bolt(M8x20)	2
6	206	GB/T91-1976	Retaining Ring(3x20)	2
7	207	FWT24-09	Pin	1
8	208	FWT24-13	Bearing Cap	1
9	209		Needle Bearing(8x35x53)	1
10	210	GB/T895-2000	Spacer(40)	1
11	211	GB/T820-2000	Flat Head Screw(M5x10)	2
12	212	FWT24-14	Friction Washer	1
13	213		Wave Washer(95)	1
14	214	GB/T894.1-2000	Retaining(55)	1
15	215		Needle Bearing(NKI 40/20)	1
16	216		Bearing(6808RS)	1
17	217		Rubber Belt Guard	1
18	218	FWT24-03	Guard Ring	1
19	219	FWT24-02	Pressure Plate	1

4. Spider Plate Assembly:





Henan Master Machinery Co., Ltd

Tel:(+86)17737606271

www.mastermachinerys.com

Item	Part	Drawing No.	Description	Qty
1	301	FWT24-04-01	Stabilizer Ring	1
2	302	FWT24-04-05	Set Screw	4
3	303	GB/T95-1985	Washer(8)	4
4	304	FWT24-04-04	Spider Plate	1
5	305		Oil Seal(20x28x4)	4
6	306	FWT24-04-06	Screw(M8x30)	4
7	307	GB/T6170-2000	Nut(M8)	4
8	308	GB/T80-1976	set screws (M8x20)	4
9	309	GB/T95-1985	Washer(8)	4
10	310	GB/T5784-2000	Bolt(M6x35)	8
11	311	GB/T93-1987	Gasket(6)	8
12	312	FWT24-04-02	Trowel Arm	4
13	313	GB/T70.1-2000	Set Screw(M8x20)	4
14	314	FWT24-01	Retainer	1
15	315	GB/T70.1-2000	Set Screw(M8x20)	1
16	316	FWT24-05	Trowel Blades	4
17	317	FWT24-06	Float Pan(option)	1